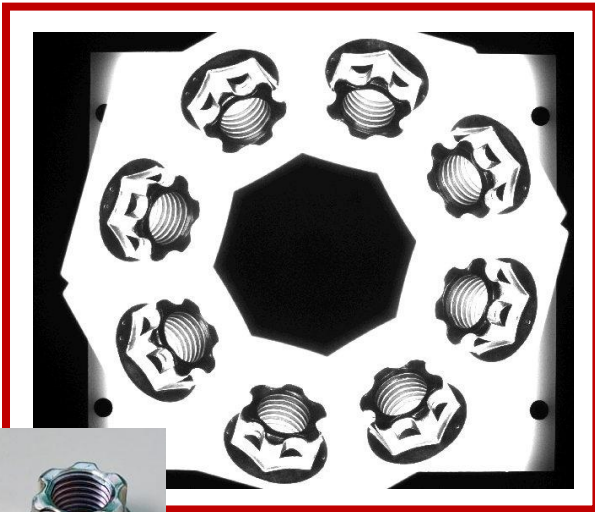


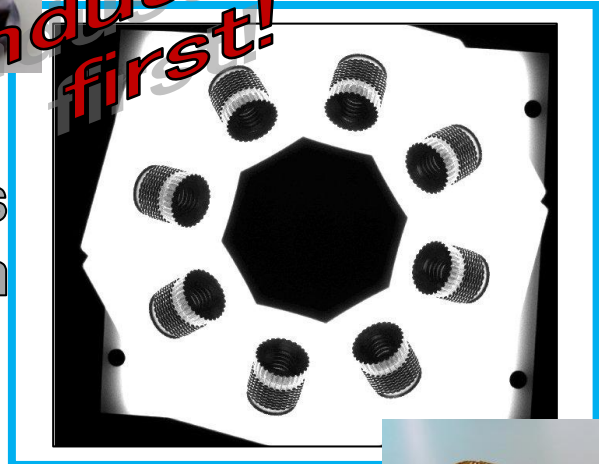
# YS-2GR Series 360° Nut Inspection

YUTAKA CO., LTD.

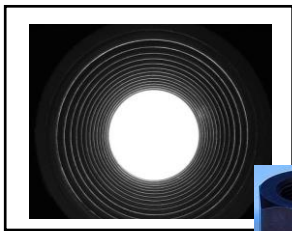


*Industry's first!*

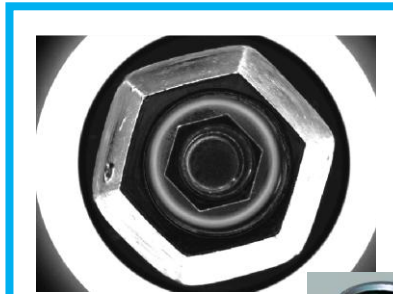
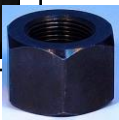
360°  
nut & parts  
inspection



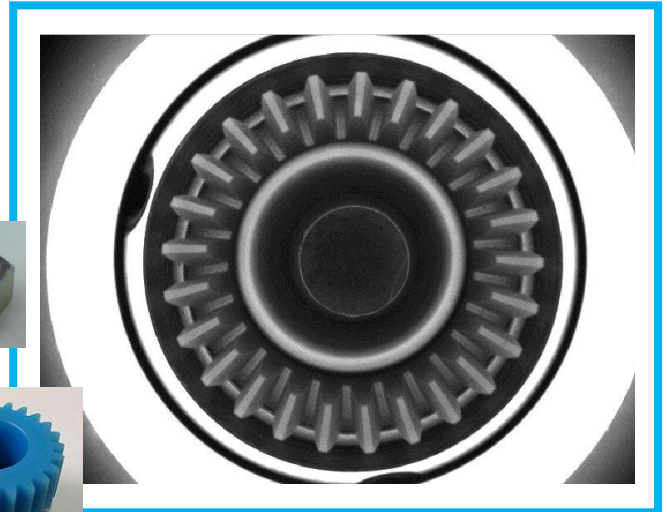
Introducing the first-ever 3D total inspection for inspection and sorting machines. This is the solution for parts that were once unable to be inspected by existing optics. Perfect for automotive parts where safety is a top priority.



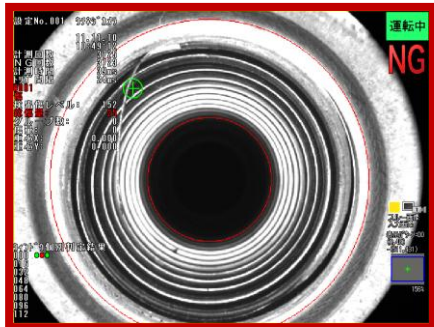
↑ Inner threading inspection with just one camera ↓



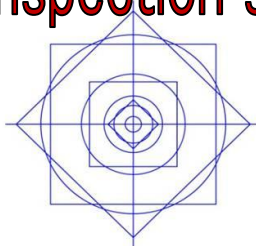
↑ Total outer inspection with just one camera for nuts



↑ Total outer inspection with just one camera for automotive parts



Inspection speed: 200~500 ppm



# 株式会社ユタカ

[www.tech-yutaka.co.jp](http://www.tech-yutaka.co.jp)